



The Lloyds Bank
Social Entrepreneurs
Start Up
Programme
dartington
- 2021 -



- Congratulations -



Dirk Rohwedder

Director -SSE South West

School for Social Entrepreneurs

You made it and what a year this has been. None of us could foresee in April last year, when you interviewed for a place on the 2020 Lloyds Bank Social Entrepreneurs Start-Up programme, or in October last year when you started your journey with your fellow entrepreneurs, that the impact of the COVID-19 pandemic on communities here in the UK and all over the world would still be felt everywhere. While the health crisis may be stabilizing in our country, the social and economic ripples will continue to flow for some time.

And yet you have shown the adaptability, resilience and stamina needed to continue working on your projects and to complete the Start Up programme in extraordinary circumstances. These qualities are among those you will need as successful social enterprise leaders.

You are the change makers, who turn ideas into purposeful action and create fantastic new social enterprises; who will deliver vital services, create award winning products, protect the environment and empower people from disadvantaged and marginalized communities; who will contribute to the wealth and resilience of the region.

This brochure celebrates you and your achievements. It also pays tribute to our fantastic team at SSE South-West, as well as the many contributors to the programme who have helped make it such as inspiring and impactful learning journey.

Ten years ago, we celebrated the graduates of our first-year long fellowship programme. Since then, the SSE team in Dartington has delivered over 60 action learning programmes, supported over 1000 social entrepreneurs and distributed over one million pounds in small grants.

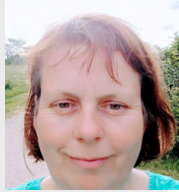
Like all our programmes to date, this Lloyds Bank Social Entrepreneurs Programme, would not have been possible without our funders and supporters.

We are grateful to Lloyds Banking Group and The National Lottery Community Fund for their support, and we look forward to continuing to serve the needs of social entrepreneurs and their communities in the region and deliver on our mission to mobilise the experience of people from all backgrounds and diverse communities; and support them to use entrepreneurial approaches to create lasting social and environmental change.

Our programme participants



Jess Woodsford
Inclusive Futures CIC



Andrea Bomanson
Grow Eat Do



Friedel Fink
Big Sis CIC



Max Cohen
Its All About You Wellbeing
CIC



Rose Taylor
Creative Curiosities SW



**Katie Donovan-
Adekanmbi**
BCoHCo Ltd



Laura Forster
We Need Music CIC



Holly Budgen
Teign Greens



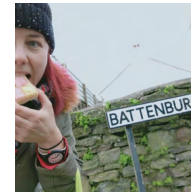
Caroline Coombs
Reunite Families UK



**Kimberley De Portela E
Prado**
Houria CIC



Joe Waterman
Fortitude Wellbeing CIC



Claudia Collins
Brislexic



Hannah Rowan-Dumont



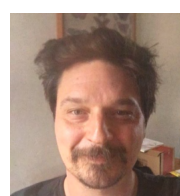
Alison Cryan
A&K's Playground



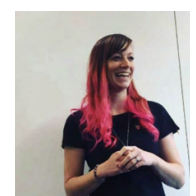
Eleanor Carr
Seaton Town Markets



Hazel Acland
The Nest SW



Simon Dyer
Resilient Lives CIC



Hannah Sturland
The Mental Health
Community

Jess Woodsford - Inclusive Futures CIC



Jess and co-founder Rose, set up **Inclusive Futures** in March 2020 to challenge inequality of opportunity in higher education. Both professional coaches, they knew the impact coaching could have.

Inclusive Futures supports underrepresented students to access and succeed in higher education through targeted coaching programmes, workshops and training for current and prospective students, teachers, higher education staff, and even parents and guardians.

With the support of SSE and the Start-Up programme, in their first year **Inclusive Futures** has worked with over 270 people, delivered over 300 hours of coaching, and had a huge impact on the students they have supported.

Their ambition is to continue to expand their reach, supporting more people to know that any future is possible.

“This last year has been a complete rollercoaster, with some amazing highs but also some tricky lows, and the friends I have made through the SSE Start up programme really helped me through it. They cheered and celebrated when things went well, and they held space, listened, supported and advised when things didn’t go as expected. I think being a social entrepreneur could be a lonely business at times if you didn’t have a tribe around you and I’m glad I feel like I do.”

www.inclusivefutures.co.uk

hello@inclusivefutures.co.uk

0117 325 2413



- Values list:
- Variety
 - Connection
 - Excitement
 - Joy
 - Physicality
 - Authenticity
 - Self-development
 - Security
 - Integrity
 - Social
 - Independent
 - Recognition
 - Creativity
 - Organisation
 - Freedom
 - Pressure
 - Risk
 - Influence
 - Stability
 - Respect
 - Challenge
 - Responsibility
 - Initiative
 - Competition
 - Autonomy
 - Making a difference
 - Self-realization
 - Wealth

Inclusive Futures CIC at Eastleigh College

Andrea Bomanson - GrowEatDo



Andrea Bomanson is the founder of [GrowEatDo](#) that grew out of community gardening and meals and is striving to become more sustainable.

[GrowEatDo](#) seeks to connect people through food growing, making and eating within Cranbrook.

[GrowEatDo](#) wishes to set up a community café with a small garden where people can gather, volunteer and learn new skills. [GrowEatDo](#) is forming as a CIC this autumn, so when the space for the proposed community café is ready, [GrowEatDo](#) will be able to take this on.

We are seeking funding for a development post to help achieve this.

The SSE program has helped [GrowEatDo](#) to move from a community group mind-set into a business mind-set without losing the important values driving this enterprise.

“The programme has given Grow Eat Do a helpful framework for the project to develop further. It has given helpful information as well as simplified and made the aspects of setting up a social enterprise less daunting. The support was immensely valuable and there were times we may have given up on this project if the support had not been there.”

www.facebook.com/groweatdo.cranbrook

07747 817097





Friedel Fink - Big Sis CIC

Big Sis is a female-led collective, founded by creative educator Friedel. We support girl's mental health and help build resilience at the earliest possible stage: pre-puberty.

This crucial time in a person's life needs to be supported by more people than parents and carers. It takes a village to raise a child and we build the village. SSE enabled us to set the foundations.

Our first crowdfunded pilot 'Girl Mentoring Programme', is a 12-week empowerment curriculum. 'Big Sisters', local mental health/psychology students and mums are supporting 50 Year 5 and 6 girls in 4 Plymouth schools.

Next, **Big Sis** will develop a virtual Girls Empowerment Platform for those supporting girls 8-13, enabling the access to puberty education services and tool sharing.

SSE allowed **Big Sis** to grow at our own pace, to set up strong foundations as a CIC, signpost us to helpful agencies and started our wholesome integral business journey.

“SSE inspired me to set up a business that suits not just my purpose and ambitions, but my actual lifestyle. It helped me to understand that my values as a person and in business are the same and encouraged me to keep living a life of integrity, letting my personal values shine through in my business at all stages.”

www.big-sis.co

Hello@big-sis.co

07714 014760



Max Cohen - It's All About You Wellbeing CIC



Max started [It's All About You Wellbeing](http://www.itsallaboutyouwellbeing.com) so that LGBTQ+ people across South West England could find affirmative counselling and wellbeing services.

Since being a student on SSE , Max has learnt new skills to diversify the organisation and build a range of groups and courses for LGBTQ+ communities and the professionals that work to support them. Part of this has been writing and running a successful wellbeing course for transgender adults. He is currently developing a digital self-care toolkit written by and for trans+ people.

[It's All About You Wellbeing](http://www.itsallaboutyouwellbeing.com) CIC has now become a CIC (Community Interest Company) and provides up-to-date resources, bespoke LGBTQ+ awareness training for wellbeing professionals, peer support for LGBTQ+ communities, trainee counselling students and qualified practitioners.

“Although I started the programme with passion, I feel the programme has fuelled this and both guided and supported my personal development. As a counsellor, I’m used to a level of self-awareness, but the variety of professional and personal development on this programme has been the key to me building on my strengths, dealing with ‘imposter and founder syndrome’. My confidence has increased. I’ve got a newfound sense of pride and I feel like I’ve found my true voice.”

www.itsallaboutyouwellbeing.com

contact@itsallaboutyouwellbeing.com

07500 015574



"Thank you
all for being
yourselves and for
inspiring me to live
my authentic life"

- Participant, Trans+ Wellbeing Course



"A kind and
safe place where
no-one judged
anyone, which is
rare to find"

- Participant, Trans+ Wellbeing Course



"I'm much less
critical about
myself than I was
at the start of the
course"

- Participant, Trans+ Wellbeing Course



"Trans joy is
infectious!"

- Participant, Trans+ Wellbeing Workshop



"This course has
helped so much
and has totally
influenced how I
view my life"

- Participant, Trans+ Wellbeing Course



"I've not
met other trans
people before,
and it's been
amazing."

- Participant, Trans+ Wellbeing Course

Rose Taylor - Creative Curiosities SW



Creative
Curiosities SW

Rose started [Creative Curiosities SW](#) to reduce social isolation and exclusion from education and employment for Neurodivergent children and young people.

She has lived experience of autism and learning disabilities as a family member, and professional expertise gained from diverse roles including respite care, project lead, teaching, tutoring, Activity Centre Manager and Mental Health Lead for a charity.

The project has developed under the expert guidance of the Start Up programme. [Creative Curiosities SW](#) already run social groups including adventurous activities. Shockingly, however, only 22 per cent of autistic adults are in employment - [Creative Curiosities SW](#)'s direct response to that statistic is

to launch a neurodivergent youth theatre and music production group as a training and support hub run for and by young people.

“From an overwhelming, slightly vague desire to change things, the programme has enabled the project to grow into a service which is being recognised and consulted by families and by other providers. It’s been a real rollercoaster, scary at times when realisation of all the legal and financial regulations hit, and empowering to listen to witness testimonies, and to see first-hand the growth of peers on the project.”

www.facebook.com/creativecuriositiessw

rose@creativecuriosities.org.uk

07764 737620



Being Creatively Curious on Dartmoor



Katie Donovan-Adekanmbi - BCohCo Ltd

Katie registered [BCohCo Ltd](#) as a business in January 2020, not knowing that Covid would hit or exasperate inequalities the way it did.

[BCohCo's](#) organisational goal is to support organisations to build cohesive communities, internally and externally. Using a system's thinking approach, we offer a Learning and Development programme that centres on Diversity, Inclusion, Cohesion and Equality (DICE).

[BCohCo](#) works together with organisations to ensure internal culture represents the customers they serve. Our purpose aligned to combat what was happening in the world. We were able to activate and start operating before we ever imagined we would.

It's been a complete whirlwind of the best kind. Now we are looking forward to embarking on the SSE Trade Up programme.

“Having a network of social entrepreneurs to bounce off of has been invaluable to our development. The programme has been an incredible support in helping me see the woods through the trees, especially when doubting myself.

Build the change!!!”

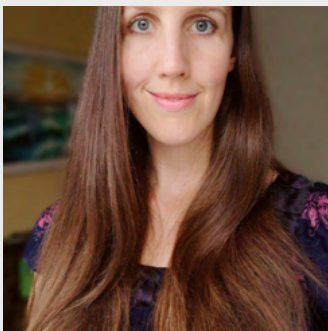
www.instagram.com/bcohco

www.facebook.com/bcohco.dice.3

www.twitter.com/BCohC0

Katie@BCohCo.com

07494 763686



Laura Forster - We Need Music CIC

Laura launched [We Need Music CIC](#) with her husband Lyndon in May 2020 with a mission to create inclusive music making and interactive listening opportunities aimed at connecting people, enabling creativity and building self-esteem and confidence. We believe that anyone can make music.

With the support of the SSE, Laura is developing her music facilitation and youth/community work background to create opportunities for children, young people and adults to build community through music.

[We Need Music](#) supports individuals and groups to explore their innate creativity using instruments, songs and sounds which suit their natural style of expression.

Since launching we have worked with young parents, children and adults with mental health problems, in a psychiatric hospital, in holiday clubs and in primary schools.

“The sharing and support between peers is so special and valuable. I’m sure many of these relationships will last well beyond the programme itself. Meeting and building relationships with peers is such a key part of taking part in the Start Up programme.”

www.weneedmusic.org

www.facebook.com/WeNeedMusicUK

info@weneedmusic.org

07951 681198



- Behind the programme -

The success of the programme is down to the valued contributors. Key **expert session** bring business skills and practical knowledge that can be applied to project ideas and tried out. We are delighted that programme fellows have returned to share their story, advice and wisdom in the **witness sessions**.

Our **action learning set facilitators** have held the peer coaching spaces that have been so hugely critical this year.



Chloe Tingle

Action Learning Facilitator



David Harries

David Harries Consulting

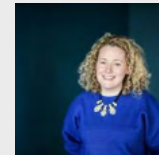
Expert Session - Managing your boards & Governance



Helen Vines

Vinesworks

Expert Session - Social Impact Measurement



Chloe Uden - SSE Fellow

Art and Energy

Witness Session - Being a social entrepreneur



Dirk Rohwedder

SSE South West

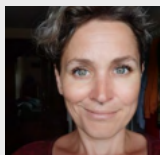
Expert Session - Costing & Pricing



James Cullen - SSE Fellow

OrateMate

Witness Session & Expert Session - Presentation Skills



Jess Holliland

SSE South West

Expert Session - Marketing
One to one participant support



Katie Sherjan - SSE Fellow

Hollywell Housing Trust

Witness Session - Leading & Managing



Louise Treacher

4 George

Expert Session - Cashflow
Forecasting & Financial
Management



Paul Read

Drift Advice

Expert Session - Funding



Susan Moores

SSE South West

One to One participant support



Karin Jordan

Action Learning Facilitator



Liz Gavrilenko - SSE Fellow

Knead to Connect CIC

Witness Session - Managing
your budgets



Marie Yates - SSE Fellow

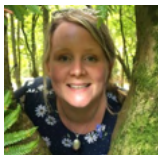
Canine Perspective CIC

Witness Session - Selling with
Confidence



Pete Davies

Expert Session - Leading &
Managing a team



Felicity Day

SSE South West

Programme co-ordination



Kate Taylor-Hewett

Action Learning Facilitator



Louise Garner

Louise Garner Consulting

Expert Session - Legal
Structures



Michelle Virgo

SSE South West

Expert Session - Business
Planning

One to One participant support



Sarah Drake

Sarah Drake Coaching

Action Learning Facilitator



TEIGN GREENS
COMMUNITY POWERED VEG

Holly Budgen - Teign Greens

Teign Greens was born at the start of the Covid pandemic in March 2020. As supermarkets run out of fresh food, Holly and her partner Tim dreamt of an alternative to the broken food system.

Today, Teign Greens exists to reconnect everyone in the Teign Valley community with their food by providing them with affordable, nutritious vegetables grown in harmony with nature and the opportunity to get involved in growing it themselves.

The SSE Start Up programme gave Holly the space to step out of firefighting daily problems and start to lead the organisation as it grows.

Teign Greens is now excellently placed to grow to 150 veg box subscribers, and to support other local farms develop a similar model.

“The programme has helped me step away from the day-to-day firefighting of running an all consuming start up, and take time to look at the important areas that are never urgent, like monitoring our impact, our pricing or our governance. It’s helped me start to move from managing Teign Greens, towards leading Teign Greens.”

www.teingreens.co.uk

teingreens@gmail.com

07939 575364



Caroline Coombs - Reunite Families UK



Caroline is co-founder of **Reunite Families UK** [RFUK] an organisation set up to help bi-national families separated by UK spouse visa rules navigate the British immigration system.

The double hit of the pandemic and Brexit led to more families facing uncertainty so with the learning and support of SSE, Caroline and her team are turning **RFUK** into a CIC and in time, a charity that will ensure more families can be reunited.

With a new website, **Reunite Families UK** will have more resources and advice available; a private forum area for people to talk safely and openly; and a network of national and local connections to aid referrals such as immigration advice, mental health, welfare, housing, career advice amongst others.

Reunite Families UK is going from strength to strength and from being 'just a Facebook group' we're on our way to becoming a legitimate charity that will be able to help support and reunite more bi-national families separated by UK spouse visa rules.

"The confidence gained from the knowledge shared by the leaders and the guests is priceless and I feel very grateful for the opportunity to grow not only a business, but myself too."

www.reunitefamiliesuk.co.uk

hello@reunitefamiliesuk.co.uk

Claudia Collins - Brislexic



Claudia started [Brislexic](#) in 2019 after feeling held back from doing certain tasks and noticing that the focus on dyslexia always seemed to be negative, when there are so many things to celebrate!

[Brislexic](#) is about doing things defiantly and aims to celebrate dyslexic thinking skills and outside, round the corner from the box ideals!

[Brislexic](#) has an online shop and pops up at markets selling Punny Bristolian Cards and gifts to raise FUNds and get people talking about neurodiversity.

The other part to [Brislexic](#) is the product of Claudia's outside and round the corner of the box thinking - where she creates playful community happenings.

Through the SSE Start Up programme, Claudia has learnt about business structure, marketing and measuring social impact.

“The Lloyds Bank Start Up programme has not only taught me the skills and requirements needed to start up a business, but it has given me the confidence to move forward and make my creative dreams real!”

www.brislexic.com

brislexic@gmail.com

Hannah Rowan



Hannah started the Lloyds Bank Social Entrepreneurs Start Up programme on the brink of launching a community project in Paignton (South Devon), with a small number of other people.

What unfolded over the year-long programme was an unexpected journey of self-discovery against a backdrop of major changes in life.

Hannah is taking some time to concentrate on her family's needs, but knows that when the time is right, she can step into the world as the social entrepreneur that she has grown through the SSE, to know she is.

“Throughout the past year, it has been made clear that the purpose of the Start Up programme is to help us shape ourselves as social entrepreneurs, not to ensure we emerge with social enterprises. This focus on us as people has helped me develop a sense of self-confidence that I have not felt before. At some point, my life may have the space in it to create a social enterprise, and at that point, I now feel I have the practical tools as well as the personal tools to make it happen.”

The Mentors from Lloyds Bank

In addition to the programme support, our entrepreneurs each have a business mentor from The Lloyds Banking Group to act as critical friends, supporters and someone who can offer another point of view. We are hugely grateful to the

mentors who volunteer their time and expertise, and help add such an important additional layer of support to the social entrepreneurs.

Our huge thanks to you all.

Harry Hodgkinson

Carla Wilde

Andrew Ellis-Grace

Daniel Watts

Lisa Edwards

Daniel Maggs

Noel Moore

Melissa Arrowsmith

Bjorn Olsson

Jonathan Thomas

Eleanor Campbell

Caitlin Charvet

Ashley Braund

Alex Snoad

Sam Husbands

Bradley Andrew

Colin Powell

Lloyds Bank Social Entrepreneurs Programme





houria

Kimberley De Portela E Prado - Houria CIC

Kim is a British-Cape Verdean freedom fighter and conceived the Houria concept in 2019 after studying the topic of Modern Slavery and the University of Bristol.

All if Kim's passion and skill in the fields of cooking, coaching and advocating, come to the table in this joyful and righteous, not to mention tasty, Bristol-based social enterprise.

Houria, (Freedom in Arabic) tackles modern slavery through the joy of cooking and feasting on Pan-Afrikan cuisine.

Kim learned about the power of community leadership on the Start Up programme. **Houria** has been injected with wisdom, materials, guidance and community from the SSE this year.

It has been profoundly helpful to learn about management styles, leadership techniques, financial tools and time management, and we will keep using the materials for years to come.

“My advice - Just do it! Let your vision and faith guide you and listen to the right mentors. Prioritise sleep and laughter and just crack on. Go through the tough points joyfully, knowing there'll be so many rewards for your effort!”

www.houria.co.uk

hello@houria.co.uk

07377 059699





Joe Waterman - Fortitude Wellbeing CIC

The concept of **Fortitude Wellbeing** was born in 2018 and is a registered CIC based in Taunton, Somerset.

Joe and Olly had both experienced long-standing struggles with poor mental health. After meeting, they realised they had the same dream to utilise their respective knowledge and combine their skill sets to support people within their local community.

Fortitude Wellbeing facilitates activities which focus on creativity, movement, play, and the great outdoors. Simultaneously, we provide an opportunity to meet like-minded people from the local community who are experiencing similar life challenges.

Our core team comprises Joe and Olly (founders) with additional support from colleagues who are employed on an ad-hoc basis.

“The programme providers and coaches have all been a marvellous instrument in the facilitation of development and change for those who have taken part and I can only say thank you for all of the hard work and huge effort that has gone into providing such an beautiful course. It’s one of a kind!”

www.fortitudecic.co.uk

[@fortitudeWB](https://www.instagram.com/fortitudeWB)

Joe.fortitudecic@gmail.com

07719 188359





Alison Cryan - A&K's Playground

Alison is Co-Director of [A&K's Playground](#) (yep, she's the A!). [A&K's Playground](#) makes events to encourage you to wholeheartedly embrace your playful side, no matter your age.

[A&K's Playground](#) make creative and imaginative activities for families and exclusively for adults supporting you to shake off the day and find motivation, connection and pure joy. There is no one-size-fits-all for play so [A&K's Playground](#) interweave diverse ways to play into workshops, emboldening you to lean towards your play style. It inspires new pathways to imagination and improved wellbeing.

Alison facilitates across sectors, cross-pollinating ideas from her diverse experience in science and research communication, live events, public engagement and creative co-design.

She is excited to continue her social entrepreneurship journey thanks to the support from SSE South West and her incredible cohort.

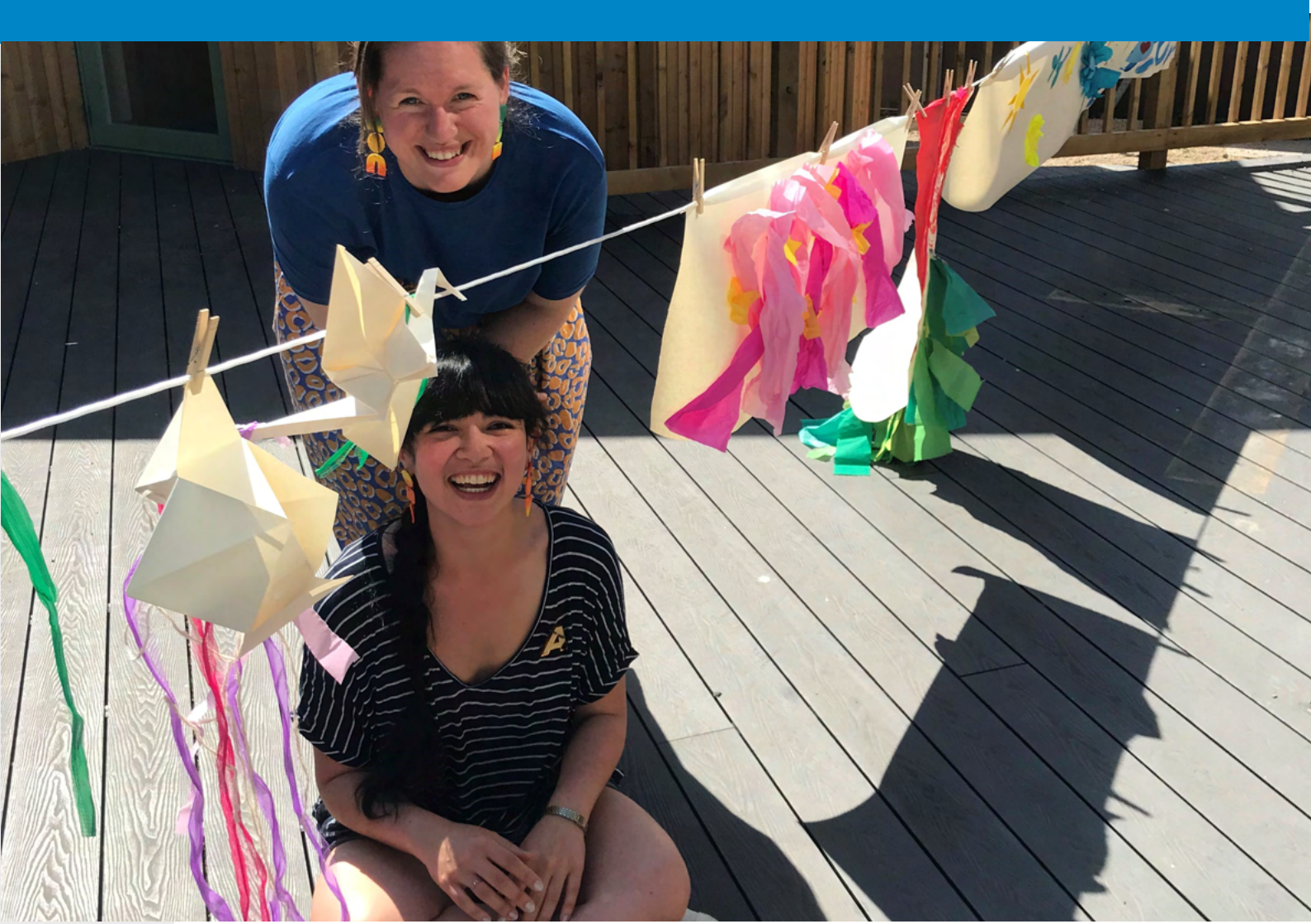
“The framing and focus on different areas were specific to our cohort and felt like it met my ever changing needs as the year went on. I was able to gather and archive all the tools SSE provided and then put them into action when the time felt right for A&K's Playground.”

www.aksplayground.com

www.facebook.com/aksplayground

[@aksplayground](https://www.instagram.com/aksplayground)

aksplayground@gmail.com





Eleanor Carr - Unique Boutique Events

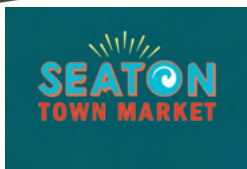
Eleanor has been building market events since 2009 and started to gain momentum in 2015 with her first pop up street food market, [Seaton Eats Boutique](#).

As these evolved Eleanor realised they had a big impact in a small town. A local market is so much more than a shopping opportunity; this instinct guided her to social enterprise.

Covid-19 eliminated Eleanor's street food events, but also offered a pause; during this pause the Start Up programme gave structure to reflection. It has offered a learning platform to consolidate Eleanor's business [Unique Boutique Events](#) as a community events business.

With stronger foundations there is room to grow existing projects and develop the next project, [Seaton Town Market](#).

"I've stepped into a leadership space and I'm more comfortable than terrified. Whereas before, I was feeling somewhat hemmed in, now I feel like this is a space where I can get my head up, see further and breathe. It feels positive and exciting. My advice - listen to everyone - exciting connections happen in the most unlikely situations."



www.uniqueboutiqueevents.co.uk
chat@uniqueboutiqueevents.co.uk
07970 857696



Hazel Acland - The Nest Southwest CIC



Hazel had been dreaming of a place where menstruation, pregnancy, birth and menopause were celebrated as more than biological milestones, but as empowering rites of passage. From this dream [The Nest Southwest CIC](#) was born ... right into a world locking down from a global pandemic!

But this new reality proved to be a fertile ground for [The Nest Southwest CIC](#) to grow as online groups meant overheads were low and they could deliver and grow more than they could have imagined possible in their first year.

The [Nest Southwest](#) team has grown from 3 to 21 individuals who want to harness the start-up momentum to create a sustainable business that fulfills the mission and creates real lasting social change.

“Despite all the Covid odds, the past year has seen a seismic shift at The Nest Southwest CIC. We have grown in every direction possible and much of this is thanks to the support and information from The School for Social Entrepreneurs and the Start-Up cohort, that have given us a solid grounding in the nuts and bolts of how to run a company.”

www.thenestsw.org/

Hazel.thenest@gmail.com

07876 267591





Simon Dyer - Resilient Lives CIC

Simon started [Resilient Lives](https://www.resilientlives.org.uk) in July 2020 to find more sustainable ways of running meaningful occupation and training programmes for vulnerable people.

Starting with a vision to run sourdough baking workshops that would lead to a market stall, the pandemic changed the focus and necessitated the creation of commercial opportunities first, so in September 2020 Simon opened [Pizza Pirates](https://www.pizzapirates.co.uk).

[Pizza Pirates](https://www.pizzapirates.co.uk) is a supportive training environment for people to learn new skills and develop confidence, become involved in their communities and earn a living wage. Soon we will start running a mental health programme and employment training for local young people.

The SSE course helped Simon to plan and grow his business, and grow his confidence in being an entrepreneur.

“My advice - keep the faith, even when things feel messy or hard, and don’t be afraid or resistant to ask for help when you need it. There’s always someone willing to offer some support. If you believe in what you are doing, you can make a success of it.”

RESILIENT LIVES



www.resilientlives.org.uk

simon@resilientlives.org.uk

07530 669419



Hannah Sturland - The Mental Health Community



Hannah started registered charity **The Mental Health Community** following her experiences of mental ill-health.

The charity are supporting people at an Individual level with a 5* rated podcast and a Community level with the Community Headspace initiative; educating businesses about mental ill-health and sharing tools to support staff and customers. Their next goal is working with health systems to achieve better outcomes for people with mental ill-health.

The Mental Health Community are creating informed, accessible communities that welcome people with mental ill-health thereby reducing isolation in this vulnerable group.

By creating a supportive, inclusive learning environment, the SSE programme has been instrumental in developing **The Mental Health Community** into delivering real impact

“My advice - learn to rest, play and regroup! Starting a social enterprise is a rollercoaster ride so make sure you have the tools to support yourself to keep going, because the world needs you enterprise. Oh and get yourself on as many SSE programmes and trainings as you can - they are all AWESOME!”

www.thementalhealthcommunity.co.uk

[@themhcommunity](https://twitter.com/themhcommunity)

Twitter: [@themh_community](https://twitter.com/themh_community)

Hannah@thementalhealthcommunity.co.uk

07841 596289

HOW TO BECOME A...



The Mental Health Community



STEP 1

Go to our website and complete your business details

STEP 2

Watch the short eLearning video about common mental health illnesses and the tools you can use in your business



STEP 3

Put what you've learned into practice and display your window sticker with pride!

CONTACT:

HANNAH@THEMENTALHEALTHCOMMUNITY.CO.UK

SIGN UP HERE:

WWW.THEMENTALHEALTHCOMMUNITY.CO.UK/BUSINESSES

We are a

 **Community Headspace**

Find out more at

www.thementalhealthcommunity.co.uk

Effective, Accessible Mental Health Support for Everyone





Caroline Reunite Families UK



Sam - SSE (she/her)



Hazel (she/her) The Nest Southwest CIC



Laura (We Need Music)



Katie Donovan-Adekanmbi



Eleanor



Hannah Rowan



Jess - Inclusive Futures



Hannah



Simon Dyer



Max Cohen (he/him)



FRiedel (Big Sis CIC)



Alison (she/her)



Joe W



Claudia Collins



Andrea



Holly Budgen



Rolling Rose



Kim Prado

- the final word -



There is no doubt that this has been a year when starting, developing and planning business has been an enormous challenge.

When these entrepreneurs applied to the programme, the pandemic was taking hold and nobody would have been able to predict how things would pan out. And yet, in this unpredictable times, this cohort of inspiring people have continued to develop, create and learn.

At the end of the programme, I think about what success means. Does it mean having a thriving, money generating, impact creating enterprise? Yes—of course. Does it also mean learning what not to do, knowing when to pause and learning the power of 'no' - absolutely.

Therefore for me, the success of this group has been the unique strength of each and every social entrepreneur to follow their own path, discover and develop their leadership, show complete resilience and keep going.

We have covered a huge amount within the last twelve months, but what I have been overwhelmed with, is that this group have created such a brilliant support network.

Despite the fact that they have never been in a physical room together, they have each contributed to an amazing virtual space where it has been possible to share the success, the challenge, the support, the resources, the tough times and the fun together.

It has been an absolute pleasure to support you all this year and I am so excited for the future developments for each of you. Keep going and keep in touch!

Sam Haydock - Learning Manager

[South West Team](#)

School for Social Entrepreneurs



Collaborative | Trusting | Always Learning | Inclusive | Entrepreneurial

Together we change lives